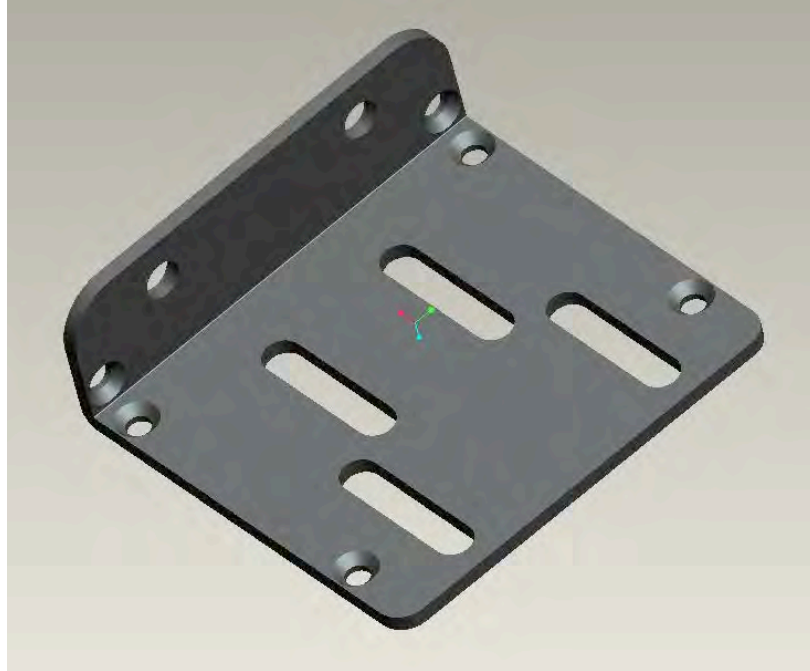


**XTREME
POWER
CONVERSION**

5-in-1 Brackets Installation Guide

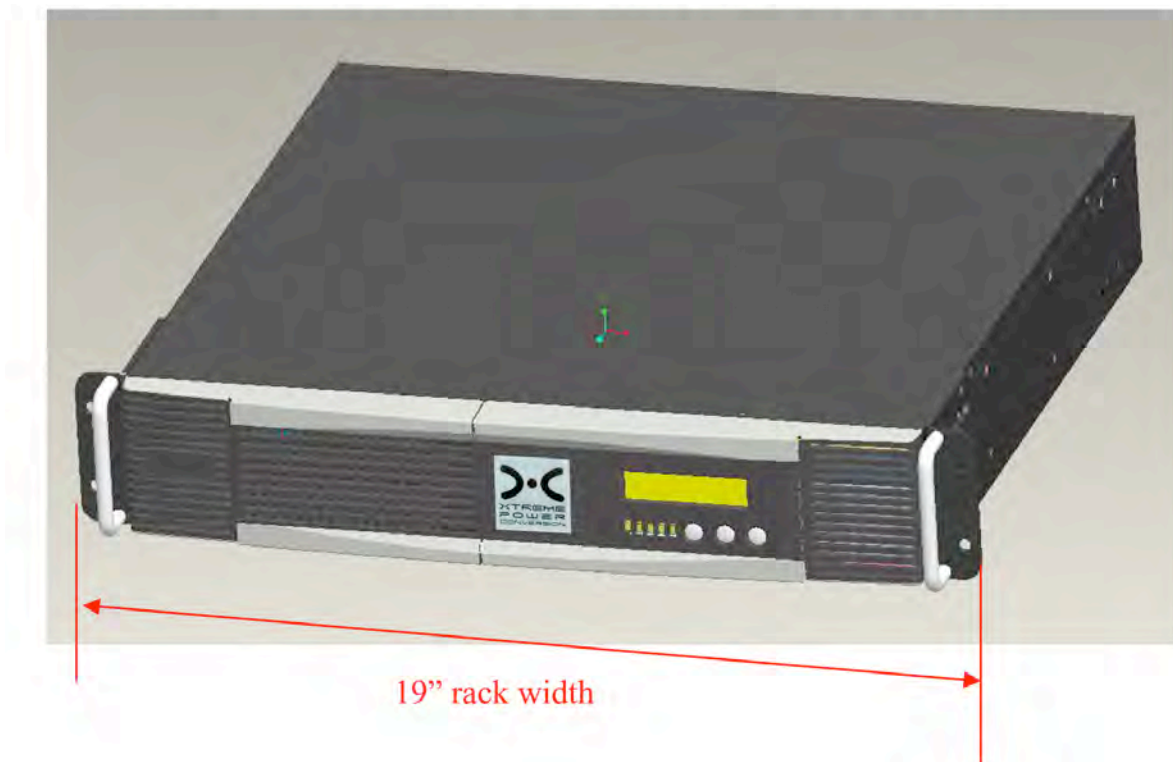
(Model #XPRT-5-1)

XPRT 5-in-1 Multi-Mount Brackets for Rack Mount 2U UPS & EBP



1. 19" Rack installation:

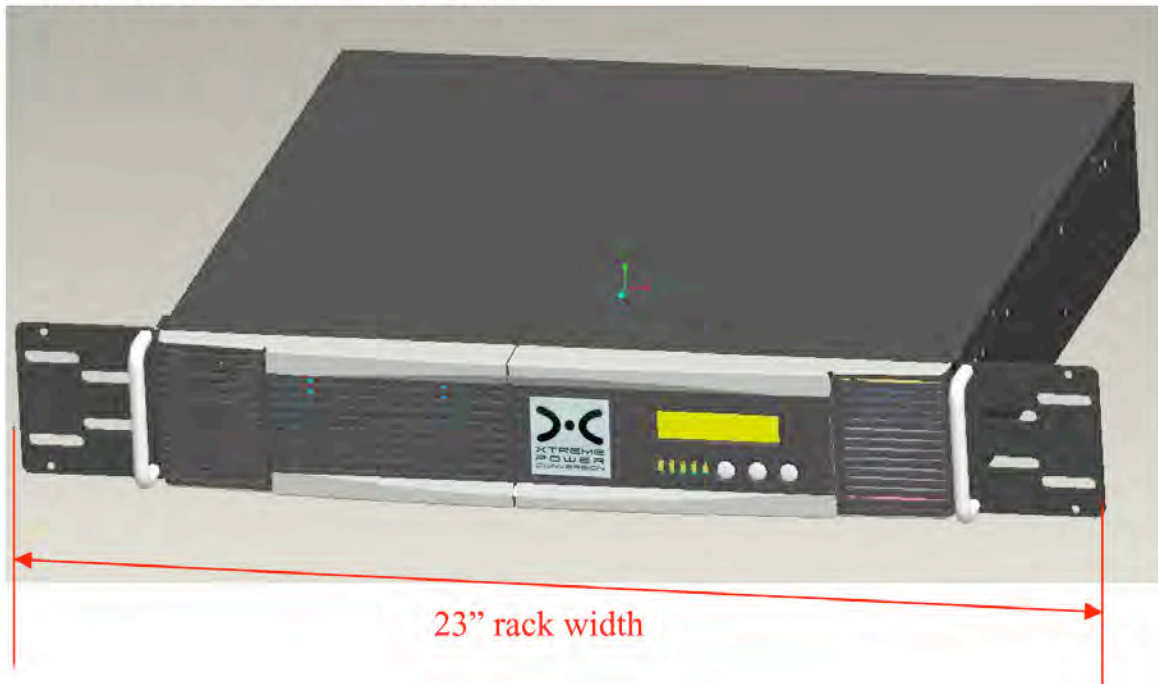
Mount the 2U rack-mount in a 19-inch EIA 310 C standard rack.



XPRT 5-in-1 Multi-Mount Brackets for Rack Mount 2U UPS & EBP

2. 23" Rack installation:

Change the position of the two mounting brackets to mount the 2U rack-mount in a 23-inch EIA 310 C standard rack.



3. Tower installation:

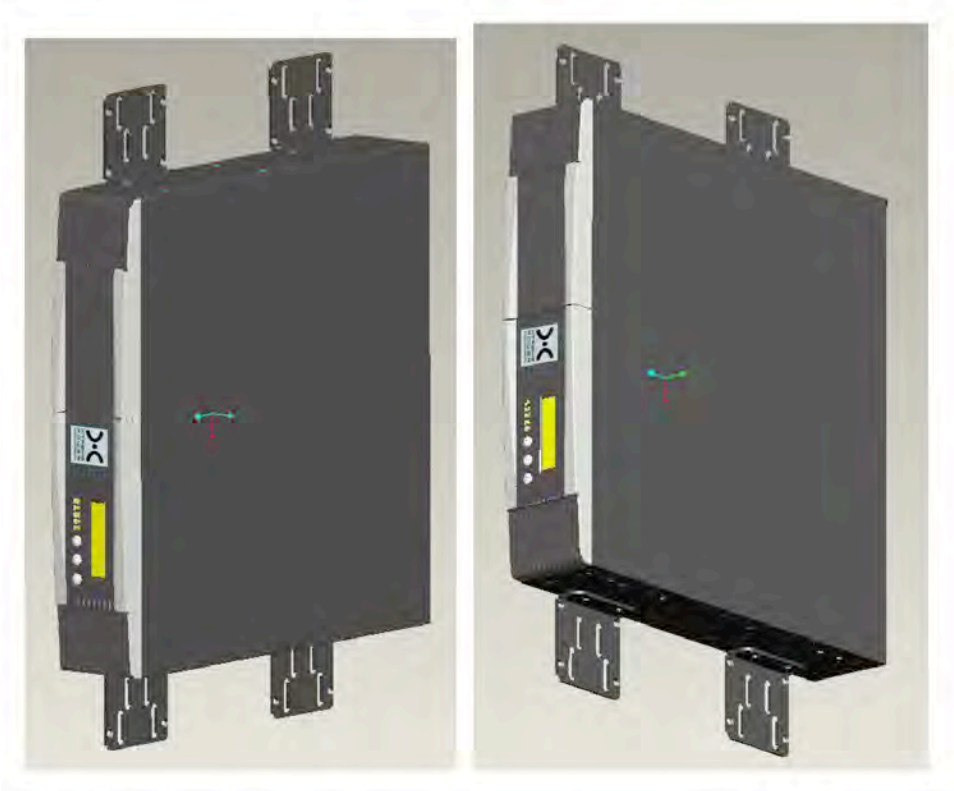
Move the mounting brackets from the front to the side and attach the brackets by screws. Then let the UPS stand with the vertical direction as the below pictures shown.



XPRT 5-in-1 Multi-Mount Brackets for Rack Mount 2U UPS & EBP

4. Wall Surface Mounting:

Move the mounting brackets from the front to the side and attach the brackets by screws. Then mount the UPS to the wall as the below pictures shown.



5. Installation with rear Bracket:

We can use bracket to support the rear side of UPS or battery cabinet.

